

**PRODUCTION
NEWS**

for internal use only

65

11 / 2020



Welcome to the production **news** 65

Contents

	XC470 ALPES SOLAIRE ENERGIE / FR	3
	XC-Board® MILLTEX / IT	4
	XC-Board® ALLIANCE OCÉANE / FR	6
	XC440 ELKOR / AUTOGRILL / FR	8
Industrial safety	XC-Board® HAMBURGER RIEGER / DE	10
Energy/Photovoltaic	XC650 LEROY MERLIN / FR	12
	XC-Board® MOBASOLAR / FR	14
Industry	XC-Board® ARCELOR MITTAL / NL	16
	XC655 JJ Mechatronic A.S. / DK	18
	XC650 Sziede Elektrotechnik / DE	20
	XC-Board® Martell / Lignères / FR	22
	XC640 Belden / NL	24
	Siebert-Group	25
	SDC610 NESPRESSO / IT	26



XC470

Alpes solaire energie / FR

SERIES

XC470-SBW-A-04-S98002

DISPLAY

55 mm LED white

MEASURES (W x H x D)

1000 x 800 x 70 mm

FEATURES

USB-C / Bluetooth
Climate compensation

energy





paper industry

production data



XC-Board®

MILLTEX / IT

Milltex is producer of a wide range of converting machines for paper and cardboard.

SERIES

XC-Board® 0421.146

DISPLAY

100 mm LED red

MEASURES (W x H x D)

480 x 425 x 170 mm

FEATURES

Profinet IO RT (class CC-B)

Readable from two sides

Pendant mounting

sea food

industrial safety

XC-Board®

ALLIANCE OCEANE / FR

Alliance Océane is specialized in the processing and conservation of fish, crustaceans and molluscs. Its workforce is between 200 and 249 employees.

SERIES

XC-Board® 0421.256-001

DISPLAY

Numeric : 25 mm LED red, extra bright

Alphanumeric :

2 x 20 characters LED red, extra bright,
character height 33 mm

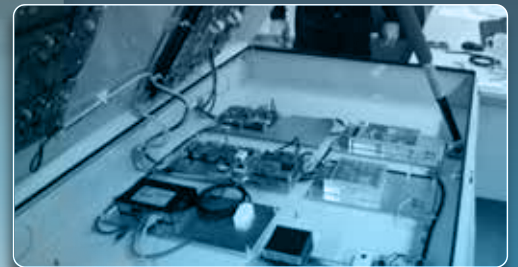
Illuminated fields : 50 x 50 mm, green/orange/red

MEASURES (W x H x D)

800 x 1100 x 130 mm

FEATURES

Ethernt



Bienvenue chez **ALLIANCE OCÉANE**

240820

10:23

24.9°C



Il vous protègent



Ne les oubliez pas !

VOTRE INFO
VOTRE INFO



Nous travaillons sans accident avec arrêt depuis

3144 jours

Record du site

233 jours

Nombre d'accident avec arrêt depuis le début de l'année

38.5

CETTE SEMAINE



AUCUN ACCIDENT



ATTENTION Accident sans arrêt



ATTENTION Accident avec arrêt



System gastronomy on freeway service



L'ENERGIE

Puissance in

Energie cum

CO₂ évité



vice station

green energy



XC440

ELKOR / AUTOGRILL / FR

SERIES

XC440-LCW-N-05 L9800E

DISPLAY

25 mm LED white

MEASURES (W x H x D)

800 x 450 x 62 mm

FEATURES

USB-C / Bluetooth



Centrale photovoltaïque

LOGIE DU SOLEIL

stantanée **8.8.6.28.0** W

ulée **8.4.2.0.2.8** kWh

8.2.9.4.2.8 kg

A photograph of a solar panel array on a roof. Three digital readouts are overlaid on the image, showing values for power, energy, and weight. The readouts are: 8.8.6.28.0 W, 8.4.2.0.2.8 kWh, and 8.2.9.4.2.8 kg. The Siebert logo is visible in the bottom right corner of the image.

production data

paper prod

XC-Board®

HAMBURGER RIEGER / DE

Hamburger Rieger is a manufacturer of corrugated board base paper, gypsum board and machine board. The products are based on 100% waste paper. Within the range of the white covered papers Hamburg Rieger is market leader in Europe. Hamburger Rieger, as part of Hamburger Containerboard, is a company of the Prinzhorn Group.

SERIES

XC-Board® 0421.422

DISPLAY

100 mm LED, red and green

MEASURES (W x H x D)

900 x 1320 x 170 mm

FEATURES

Profinet I/O, conformance class CC-B
Readable from both sides



uction





Résultat sécurité de notre magasin

Nombre de coachings sécurité réalisés depuis le début de l'année **8.294**

Nombre d'accidents depuis le début de l'année **8.8.6**

Nombre de jours sans accidents **8.420**

Record du nombre de jours sans accidents **8.420**

LUTTONS CONTRE LES ACCIDENTS DU TRAVAIL

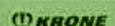
ACCIDENT DU TRAVAIL
=
TOLERANCE 0



temps réel de
cette livraison

mais aussi à l'intérieur

Je roule au gaz naturel,
zéro émission de particules fines et moins de CO²



DIY store

safety first

XC-Board®

LEROY MERLIN / FR

Leroy Merlin Leroy is a DIY store headquartered in France, with stores in Europe, Asia, South America and Africa.



SERIES

XC-Board® 0421.630

DISPLAY

25 mm LED, red

MEASURES (W x H x D)

800 x 800 x 62 mm

FEATURES

Remote control



energy efficiency

4 x 6 digits

XC-Board®

MOBASOLAR / FR
AMBROISE BRUGIERES / FR

SERIES

XC-Board® 0421.662 001 & 002

DISPLAY

25 mm LED white
4 x 6 digits

MEASURES (W x H x D)

450 x 800 x 62 mm

FEATURES

Equipment package for outdoor use





**AGRICULTURES
& TERRITOIRES**
CHAMBRE D'AGRICULTURE
YONNE

Puissance instantanée [kW]

8.8.6.2.8.0

Energie cumulée mensuellement [kWh]

8.4.2.0.2.8

CO₂ évité [kg]

8.2.8.4.2.8

Energie consommée mensuellement [kWh]

8.4.2.0.2.8

siebert

Région

Normandie-Rhône-Alpes

Puissance instantanée [W]

8.6.2.8.0

Energie cumulée [kWh]

8.4.2.0.2.8

CO₂ évité [kg]

8.2.8.4.2.8

Energie consommée [MWh]

8.4.2.0.2.8

siebert

rolling line in the steel



industry

position values

XC-Board®

Arcelormittal / NL

ArcelorMittal S.A. is an international steel group that emerged in 2007 from the Dutch Mittal Steel Company and the Luxembourg-based Arcelor group. Although the company is officially based in Luxembourg, ArcelorMittal is actually managed from London.

v2A housing

SERIES

XC-Board® 0418.009

DISPLAY

25 mm LED red

MEASURES (W x H x D)

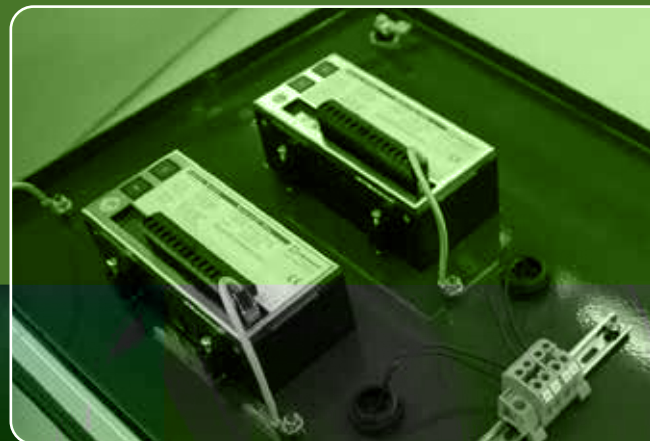
500 x 340 x 110 mm

FEATURES

2 indicator lights, green

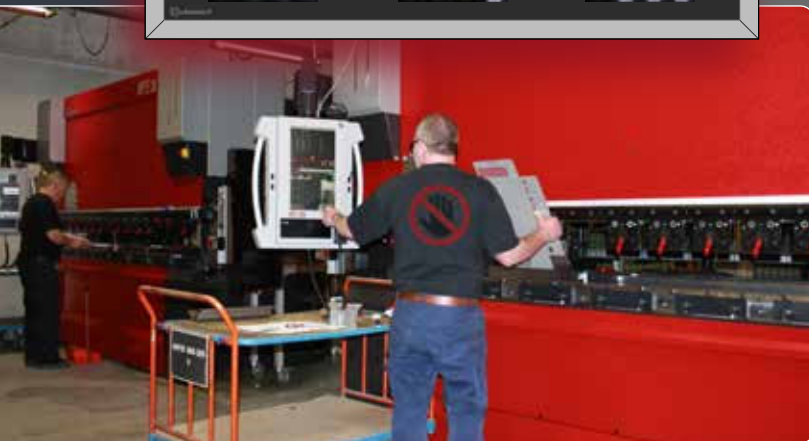
Protection class IP65

Housing: stainless steel, powder-coated



safety@work

backlit graphics



XC655

JJ MECHATRONIC AS / DK

SERIES
XC655-SCW-N-04-S99001

DISPLAY
55 mm LED white

MEASURES (W x H x D)
1150 X 800 X 88 mm

FEATURES
Ethernet



Icare



Return home safely.
Every day!

ALFA
LAVAL

Accidents this year

8:8:8:8

Longest accident-free period

8:8:8:8

with date of the last



SICHERHEIT HAT UNSERE HÖCHSTE PRIORITÄT

Dies gilt für unsere Mitarbeiter, Lieferanten und Vertragspartner



Werk: Seesen

ANZAHL DER
UNFALLFREIEN TAGE:

144

ANZAHL DER
UNFÄLLE IN DIESEM JAHR:

005

LETZTER UNFALL AM:

24.08.18



DENKE UND HANDELE BEWUSST



remote control



accident

safety board

XC650

Sziede Elektrotechnik / DE

Sziede installed this display at CROWN in Seeze /Germany. Crown Packaging is a full service provider for the packaging equipment required for successful packaging operations.

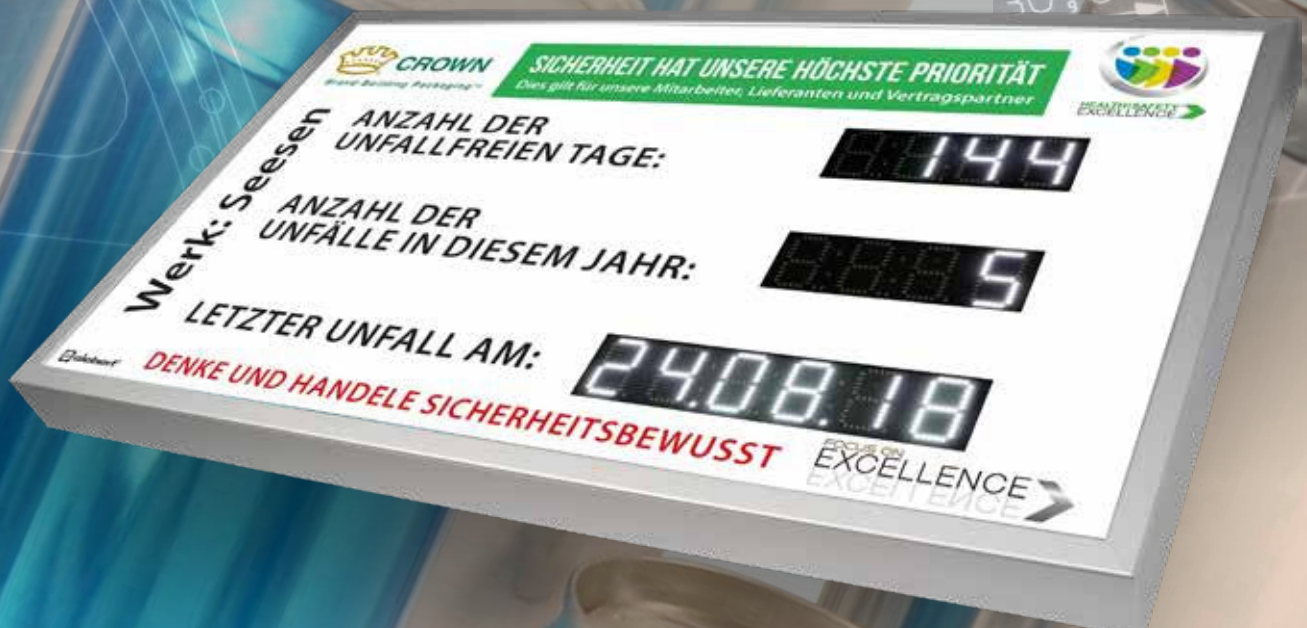


SERIES
XC650-LCW-N-02-1623-L99001

MEASURES (W x H x D)
1000 x 560 x 62 mm

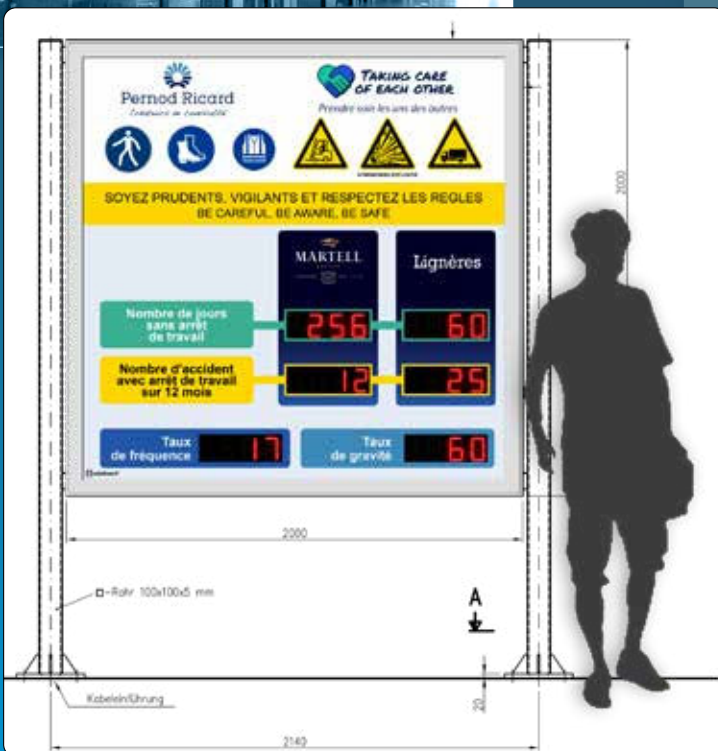
DISPLAY
55 mm LED white
Reading distance up to 20 m

FEATURES
Display of the last accident date
Remote control



safety@work

pedestal system



XC-Board®

Martell / FR

Martell is part of the wine and spirits group Pernod Ricard. Pernod Ricard is a French company specialized in the production and distribution of wines and spirits. Pernod Ricard is a world leader in its sector.

SERIES

XC-Board® 0420.649

DISPLAY

100 mm LED red, extra bright

MEASURES (W x H x D)

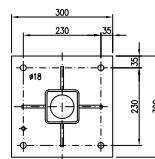
2000 x 2000 x 110 mm

FEATURES

Profinet I/O, conformance class CC-B
Pedestal system, height 2800 mm

Schnitt A-A

M 1:5




Pernod Ricard
Créateurs de convivialité

 **TAKING CARE OF EACH OTHER**

Prendre soin les uns des autres



ATMOSPHERE EXPLOSIVE

SOYEZ PRUDENTS, VIGILANTS ET RESPECTEZ LES REGLES
BE CAREFUL, BE AWARE, BE SAFE

Nombre de jours sans arrêt de travail



Nombre d'accident avec arrêt de travail sur 12 mois



Taux de fréquence

00:017

Taux de gravité

00:060

 siebert®



safety@work

connectivity and

XC640

BELDEN / NL

Belden produces and sells a comprehensive portfolio of connectivity and networking products into a variety of markets, including industrial, enterprise, and broadcast.

SERIES

XC640-LAW-N-02-L99001

MEASURES (W x H x D)

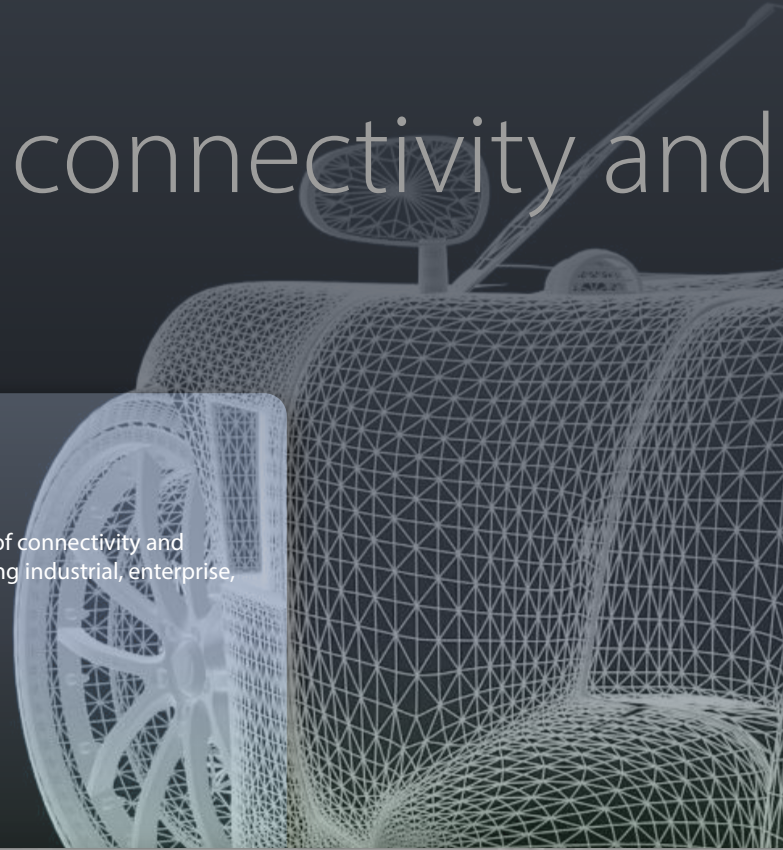
800 x 450 x 62 mm

DISPLAY

25 mm LED white

FEATURES

IR remote control



BELDEN
SENDING ALL THE RIGHT SIGNALS

Dagen zonder ongeval
Days without accident

284

siebert

www.b

networking products



siebert-group.com

GERMANY

Siebert Industrieelektronik GmbH
Siebertstrasse
D-66571 Eppelborn
Phone +49 6806 980-0
Fax +49 6806 980-999
info.de@siebert-group.com

FRANCE

Siebert France Sarl
4 rue de l'Abbé Louis Verdet
F-57200 Sarreguemines
Phone +33 3 87 98 63 68
Fax +33 3 87 98 63 94
info.fr@siebert-group.com

ITALY

Siebert Italia Srl
Via Galileo Galilei 2/A
I-39100 Bolzano (BZ)
Phone +39 0471 053 753
Fax +39 0471 053 754
info.it@siebert-group.com

THE NETHERLANDS

Siebert Nederland B.V.
Jadedreef 26
NL-7828 BH Emmen
Phone +31 591 633 444
Fax +31 591 633 125
info.nl@siebert-group.com

AUSTRIA

Siebert Österreich GmbH
Mooslackengasse 17
A-1190 Wien
Phone +43 1 890 63 86-0
Fax +43 1 890 63 86-99
info.at@siebert-group.com

SWITZERLAND

Siebert AG
Bützbergstrasse 2
CH-4912 Aarwangen
Phone +41 62 922 18 70
Fax +41 62 922 33 37
info.ch@siebert-group.com

INTERNATIONAL

Argentina, Australia,
Czech Republic, China,
Columbia, Denmark,
Estonia, Finland, India,
Great Britain, Hongkong,
Island, Israel, Korea, Malaysia,
Mexico, Norway, Poland,
Russia, Singapore,
Slovakia, Spain,
South Afrika, Turkey



GRAZIE AL PROGETTO DI RICICLO,
IN UN MESE ABBIAMO RACCOLTO:

CAPSULE ESAUSTE

835272

KG

CHE DIVENTERANNO:



ALLUMINIO

816352

KG



COMPOST

816101

KG

SERIES
SCD610-143-S9900

DISPLAY
25 mm LED white

MEASURES (W x H x D)
420 x 297 x 33 mm

FEATURES
Information about recycling